

COLOUR BLEND
FOAM™

GET READY TO COLOUR
BEFORE STARTING

- Use a smock or an old towel to protect your clothing.
- Have a clock handy for timing.
- Apply colour to dry hair.

DO SKIN ALLERGY TEST 48 HOURS BEFORE EACH APPLICATION. SO BUY YOUR COLOUR 48 HOURS BEFORE DYEING YOUR HAIR. EVEN IF YOU HAVE ALREADY USED COLOURING PRODUCTS IN THE PAST.

REMEMBER TO USE GLOVES WHEN APPLYING THE FOAM HAIR COLOUR PRODUCT

1 MIX



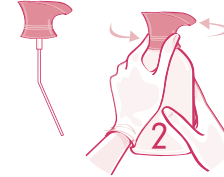
Put on the gloves



- Add bottle (1) to bottle (2). Replace the white cap.



- Give the bottle 3 simple shakes to mix contents: formula mixes easily
- Let bottle settle for 30 seconds before squeezing.
- Do not re-shake during use.



- Insert the foamer cap in the bottle and screw on tightly.
- Foamer cap is **NOT A PUMP**.

ONCE MIXED, NEVER RESEAL OR STORE THE COLOUR IN A CLOSED CONTAINER AS IT COULD BURST.

THIS KIT CONTAINS:

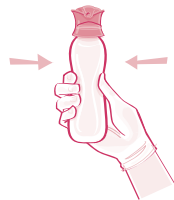


Formula



Activator

2 SQUEEZE & DISPENSE



- Keep the bottle UPRIGHT. FIRMLY SQUEEZE center of the bottle.



Do NOT hold horizontally while squeezing

- SQUEEZE foam to fill half the palm of your gloved hand.
- If initial foam is runny do not apply. Squeeze lightly 2-3 times until high quality foam is dispensed.



- Distribute foam to both hands and apply to hair.

IF FOAM OR COLOUR GET ON YOUR SKIN OR HOUSEHOLD SURFACE, WIPE IT OFF IMMEDIATELY WITH A DAMP TOWEL.

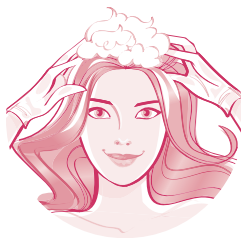


Foamer Cap



ColourSeal™ Conditioning Gloss

3 APPLY



- For all over application, work the product into dry hair from root to tip using a shampoo-like motion. Keep applying until hair is completely wet.
- For root targeted application, apply to roots and greys first, then to the rest of your hair.



- Carefully re-touch your hairline and temples again for complete coverage. Wait 25 minutes.



For resistant greys leave on an additional 10 minutes.



- Rinse until water runs clear.



- Apply the conditioner. Leave on for 2 minutes. Rinse out completely. Save second packet. Use 1 week later.



Gloves

QUESTIONS? COMMENTS?

Australia Freecall: 1800 226 524
New Zealand Freecall: 0800 800 044

THE INSTRUCTIONS BELOW, PROVIDED BY THE CLAIROL HAIRCOLOUR EXPERTS, WILL GUIDE YOU STEP-BY-STEP THROUGH AN EASY COLOURING EXPERIENCE.

COLOUR BLEND
FOAM™
Tones and highlights
in a drip-free foam!



BEFORE YOU BEGIN THIS HAIR COLOUR EXPERIENCE PLEASE READ THE INSTRUCTION LEAFLET CAREFULLY.

CLAIROL®
COLOUR BLEND
FOAM™
nice'n easy

- Keep a watch close by so you can check the development time.
- To protect your clothes from splashes, place an old towel around your shoulders.
- Very important: Only use Nice 'n Easy ColourBlend Foam™ on dry hair. Don't wash your hair on the day of colouring.



IMPORTANT: SAFETY INSTRUCTIONS

HAIR COLOURANTS CAN CAUSE ALLERGIC REACTIONS WHICH IN RARE INSTANCES CAN BE SEVERE. TATTOOS MAY INCREASE YOUR RISK OF ALLERGY, TO REDUCE YOUR RISK FOLLOW THESE INSTRUCTIONS

1. DO NOT USE THIS PRODUCT AT ALL IF:
 - You have already experienced any reaction to colouring products.
 - You have sensitive, irritated or damaged scalp.
2. PERFORM A SKIN ALLERGY TEST 48 HOURS BEFORE EACH PRODUCT USE (even if you have already used colouring products before.)

NEED ADVICE? Australia Freecall: 1800 226 524
New Zealand Freecall: 0800 800 044

In these cases do not conduct the skin allergy test and consult a doctor before using any hair colour product.

SKIN ALLERGY TEST INSTRUCTIONS

MUST BE PERFORMED 48 HOURS BEFORE YOU COLOUR YOUR HAIR: You will need a cotton ball or swab, a plastic bowl and a plastic spoon.

1. To open, unscrew the entire ColourBlend Foam™ Activator bottle cap (Bottle #2). Then unscrew the ColourBlend Foam™ Formula cap (Bottle #1).
2. Mix small, equal parts of the ColourBlend Foam™ Formula and ColourBlend Foam™ Activator in a plastic bowl.
3. Tightly recap both bottles.
4. Apply mixture to a test area approximately 1 cm² in the bend of your elbow. Allow to dry. Do not wash this area for 48 hours. During washing, protect with an adhesive bandage and remove it immediately after washing.
5. Examine the test area during the next 48 hours. If no reaction occurs, you are ready to colour.
6. This test represents an important precaution. However showing a negative result to this skin allergy test is no guarantee that an allergic reaction may not occur at a future hair colouring point. Therefore it is important to carry out a skin allergy test 48 hours prior to every hair colouring.
7. Please consult your doctor if you have any doubts.

NOTE: IF A RASH, REDNESS, BURNING OR ITCHING OCCURS YOU MAY BE ALLERGIC. STOP. YOU MUST NOT USE THIS PRODUCT.

WHAT TO DO IF YOU HAVE A REACTION DURING OR WITHIN THE NEXT 48 HOURS OF COLOURING YOUR HAIR

IF DURING COLOURING YOU EXPERIENCE:

- Any stinging or burning and/or rash, rinse immediately and discontinue use as this may be an indication of more serious reaction.
- DO NOT colour your hair again before consulting a doctor or seeking medical advice.
- Rapidly spreading skin rash, dizziness or faintness, shortness of breath and/or swelling eyes/face, rinse immediately and
- **SEEK IMMEDIATE MEDICAL ATTENTION.**

IF AFTER COLOURING OR ON THE FOLLOWING DAYS YOUR EXPERIENCE problems, such as skin itching, skin rash, swelling to eyes/face, blistering and/or skin or scalp weeping **SEEK IMMEDIATE MEDICAL ATTENTION.**

Retain the product for identification and call one of the following numbers:

Australia Freecall: 1800 226 524

New Zealand Freecall: 0800 800 044. Our colour experts

will advise you what to do next and reimburse your purchase of this product if necessary.

SPECIAL CAUTIONS

- This product contains ingredients including hydrogen peroxide, which may cause severe eye irritation and possible permanent eye injury. If the product gets into your eye, flush immediately with a large amount of lukewarm water and seek medical advice.
- We recommend removing contact lenses before applying hair colour. If you must wear contact lenses during application and any product gets into your eye, remove the lens first, then flush immediately with a large amount of lukewarm water and seek medical advice.
- Never use hair colour on eyebrows or eyelashes or if your scalp is irritated or injured.
- Do not inhale or ingest product.
- Do not use if your hair has been coloured with henna or metal dyes.
- Prepare and use the product in a well-ventilated area. If you experience inhalation difficulties, move to fresh air.
- Remove all metal objects from hair before and during colouring.
- Wear gloves and rinse hair well after application.
- Keep product in a cool place away from heat and light. Do not mix this colourant with any other product. Do not keep any unused mixed product.
- Do not leave the mixture in a closed bottle (bottle may expand or burst).
- Product not intended to be used on children.

KEEP ALL HAIR COLOURING PRODUCTS OUT OF REACH OF CHILDREN.

STRAND TEST

Do the Strand Test **each** time you colour to determine optimal timing and colour results. Perms, relaxers, previous colour, and the sun can affect your results and timing. You will need: scissors, tape and a clock.

1. Cut a ¼ inch strand from the darkest or greyest part of your dry hair close to the scalp and tape at the cut end.
2. Completely cover the hair strand with the mixture remaining from Allergy Test. Start timing.
3. After 15 minutes, check the strand. If the strand is not the colour you want, return it to the mixture and check the colour every few minutes for up to 25 minutes. For extra light blonding, more intense colour results, or to cover resistant grey hair, it may be necessary to leave the product colour on for up to 45 minutes.

Fill in your personal colour time below:

My timing for desired colour:
_____ minutes.

DO SKIN ALLERGY TEST 48 HOURS BEFORE EACH APPLICATION EVEN IF YOU HAVE ALREADY USED COLOURING PRODUCTS

COLOUR HINTS & TIPS

- **Do not apply to wet hair.** Apply colour to **dry** hair that is free of styling product build-up. If hair has build-up, shampoo one day prior to colouring. Do not shampoo immediately before colouring. Your scalp has natural oils that help to protect it during the colouring process.
- If any colour gets on your skin or household surface, wipe it off immediately with a damp towel.
- Use the additional **ColourSeal Conditioning Gloss** 1 week after colouring. It has been designed to give you long-lasting benefits.
- Call the Expert Colour Consultants for Australia Freecall: 1800 226 524, or New Zealand Freecall: 0800 800 044, if you are going more than two shades lighter or darker than your current colour, going dramatically red or if you have bleached, double processed or highlighted hair. Wait at least 1 week after perming or relaxing before colouring.

FIRST AID

- For advice, contact a Poisons Information Centre (Australia 131 126, or New Zealand 0800 764 766) or a doctor at once. If swallowed, do not induce vomiting. If in eyes, hold eyelids apart and flush the eye continuously with running water. Continue flushing until advised to stop by the Poisons Information Centre or a doctor, or at least for 15 minutes.

99850517

CLAIROL NICE 'N EASY is a trademark of The Procter & Gamble Company.